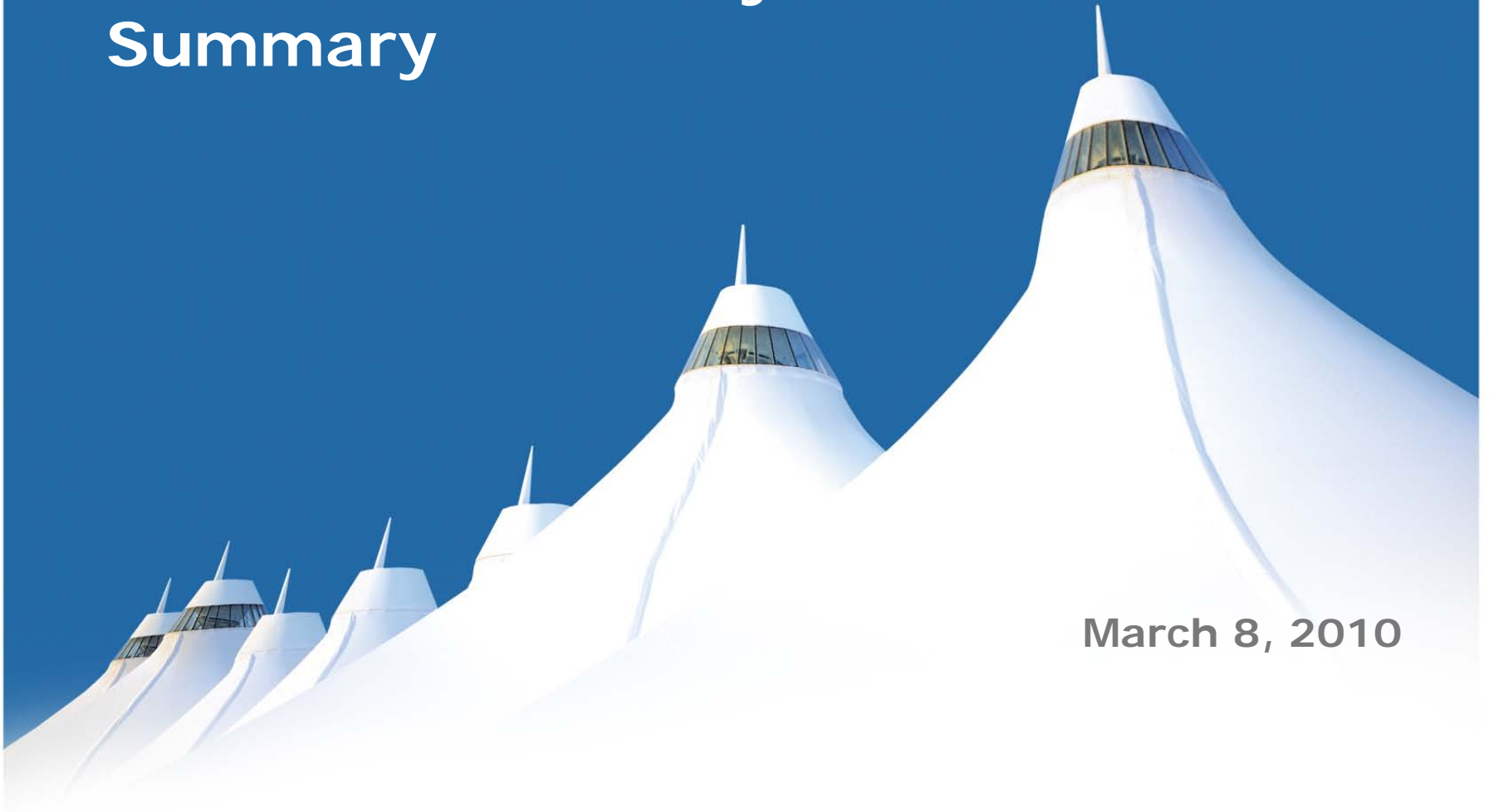


2009 Sustainability Summary

March 8, 2010



DIA was Built with the Environment in Mind

- ✓ Dedicated deicing pads
- ✓ Deicing fluid collection, conveyance, and storage
- ✓ Onsite glycol recycling facility
- ✓ Municipal solid waste recycling
- ✓ Onsite CNG stations
- ✓ Underground fuel hydrant system with sophisticated monitoring
- ✓ Electricity and preconditioned air supplied to 100% of the gates
- ✓ Alternatively fueled vehicles
- ✓ Terminal and concourses designed to enhance natural daylight

2

DIA's Environmental Recognition

- ✓ EMS certified to ISO 14001 in 2004, the first U.S. airport to implement a facility-wide ISO 14001-certified EMS
- ✓ Accepted into CDPHE Environmental Leadership Program in 2004
- ✓ Received 2 City and County of Denver 5281 awards
- ✓ Received the Colorado Environmental Partnership/CDPHE Sustainability Champion Award
- ✓ Participating in the Global Reporting Initiative Airport Sector Supplement Development

EMS, Greenprint Denver, and Climate Action Plan Goals

- ✓ Reduce energy use by 1% per passenger
- ✓ Reduce gasoline use by 5%
- ✓ Reduce hazardous waste generation by 5%
- ✓ Reduce solid waste by 5% per passenger
- ✓ Reduce greenhouse gas emissions by 10% per capita by 2012 relative to 1990
- ✓ Maintain aircraft deicing fluid collection efficiency of 69%
- ✓ Increase alternatively fueled light-duty vehicles to 70%
- ✓ LEED Silver standard for all new city construction

Energy and Emissions



Photovoltaics at DIA

Three photovoltaic projects underway/completed at DIA to day:

Pena Boulevard array: **2 Megawatt facility (DC)**
7.5 acres
9,254 solar panels at 216 watts/panel
Generated 3.256 million kWh year 1

Fuel Farm array: **1.6 Megawatt facility (DC)**
9 acres
7,392 panels at 216 watts/panel
DIA fuel farm and distribution
Expected to generate 2.4M kWh year 1

2010 project: **4.3 MW facility**
30 acres

Energy and Emission Reduction Projects

- ✓ Anti-idling campaigns
 - No idling message on fuel pump system
 - “Engines OFF!” air fresheners
 - No Idle Zone signage
- ✓ Replacement of gasoline vehicles
- ✓ Engine retrofits
- ✓ Carpool and public transportation incentives
- ✓ Lighting retrofits
- ✓ Hybrid taxi fee reduction program

Materials Management



System Improvements

- ✓ Added recycling to the food courts
- ✓ Implemented an organics collection and composting pilot
- ✓ 20% reduction in paper usage
- ✓ New environmental training for purchasing card holders
- ✓ Increase in solid waste diversions to 11.9% (4.2% in 2004)
- ✓ Added DVD/CD recycling to the list of recyclables at DIA

2009 Report Card

Gasoline usage: 539 <i>(gallons gasoline per gasoline vehicle)</i>	Actual: 644
Electricity usage target: 5.06 <i>(kWh used per passenger)</i>	Actual: 4.58
ADF capture: 69% <i>(ratio of applied to collected)</i>	Actual: 70%
Hazardous waste: 25.7 <i>(pounds per million passengers)</i>	Actual: 6.1
Solid waste to landfill: .42 <i>(pounds per passenger)</i>	Actual: 0.43
Paper reduction: 10%	Actual: 12%

Sustainability makes Cents

- ✓ **\$6,200** saved by using 13% less paper at DIA
- ✓ **\$12,000** savings from reducing HW generation
- ✓ **\$22,000** in gasoline costs saved by DIA carpoolers
- ✓ **\$24,000** saved from new fry oil contract
- ✓ **\$95,000** in savings due to solid waste recycling
- ✓ **\$150,000** in annual insurance premium savings
- ✓ **\$500,000** less spent due in part to reduced usage of gas and CNG
- ✓ **\$6.8 million** savings by using less pavement deicer
- ✓ **\$1.4 million** avoided cost for on-site aircraft deicing fluid recycling

11

Materials Management

- 20% reduction in paper use by 2011
- New printer policy
- Composting Program



DIA's 2010 Sustainability Initiatives

Energy Initiatives

- 3rd solar installation
- Additional lighting retrofits
- Test LED lighting on airfield
- Building Automation System



Air Emissions Reduction

- Prepare a Greenhouse Gas Inventory to develop a baseline
- Evaluate stationary source emissions for possible reductions



Water Quality

- Evaluate alternatives for aircraft deicing fluid control
- Update Drainage Master Plan
- Stormwater Study
- Wetlands Study
- Upgrade water quality BMPs associated with construction activities



Education & Outreach

- Annual workshop for employees, contractors, and consultants
- New employee orientation
- Earth Day at DIA activities
- Articles in various publications
- Environmental awareness training
- Presentations and tours with community and industry groups



THANK YOU!